

Customer: Date: 9/29/2009
 Contact: From:
 Telephone: Company:
 Cell: Return Tel:
 Fax: Return Fax:
 Job:
 Quote #: 0

GIVEN DATA

Construction

Item: DXM5-3
 Coils Per Bank: 1
 Tube OD IN: 5/8
 Style: EJ
 Fins Per Inch: 6
 Rows: 4
 Fin Surface: Optimize ABC
 Fin Height (IN): 55.50
 Finned Length (IN): 67.00
 Tubing Mat. (IN): 0.020 Copper
 Fin Mat. (IN): 0.0075 Aluminum
 Circuiting: Optimize
 Face Area (SQ FT): 25.82

Air Side

Air Flow (Sft^3/min) 14,200
 Altitude ft: .00
 Ent. Air DB/WB °F: 95.00 / 78.00
 Lvg. Air DB/WB °F: .00 / .00
 Total / Sensible MBH: 600.0 / .00
 Max Air PD "H2O: .00

Refrigerant Side

Refrigerant: 410A
 Super Heat °F: 8.00
 Saturated Suction Temp °F: 45.00
 Liquid Temp °F: 110.0

OUTPUT DATA		Most Economical			Specified Coil		
		Coil 1	Coil 2	Coil 3	Coil 4	✓ Coil 5	Coil 6
Model Number:						5EJ0604B	
Air Velocity:	(Sft/min)					549.9	
Total Capacity:	MBH					656.2	
Sens. Capacity:	MBH					366.2	
Lvg. Air DB:	°F					71.12	
Lvg. Air WB:	°F					66.58	
Standard APD	"H2O					.36	
Code 18 / 19:						8018/25	
Suction Conn.:	IN					(2) 2.625	
Liquid Conn 1:	IN					(2) 1.125	
Liquid Conn 2:	IN					N/A	
Refr. PD:	lbf/in^2					5.26	
Refr. Velocity:	ft/min					1,908	
Weight:	lbm					292.7	
Notes:						BCJKMQ	

Notes:

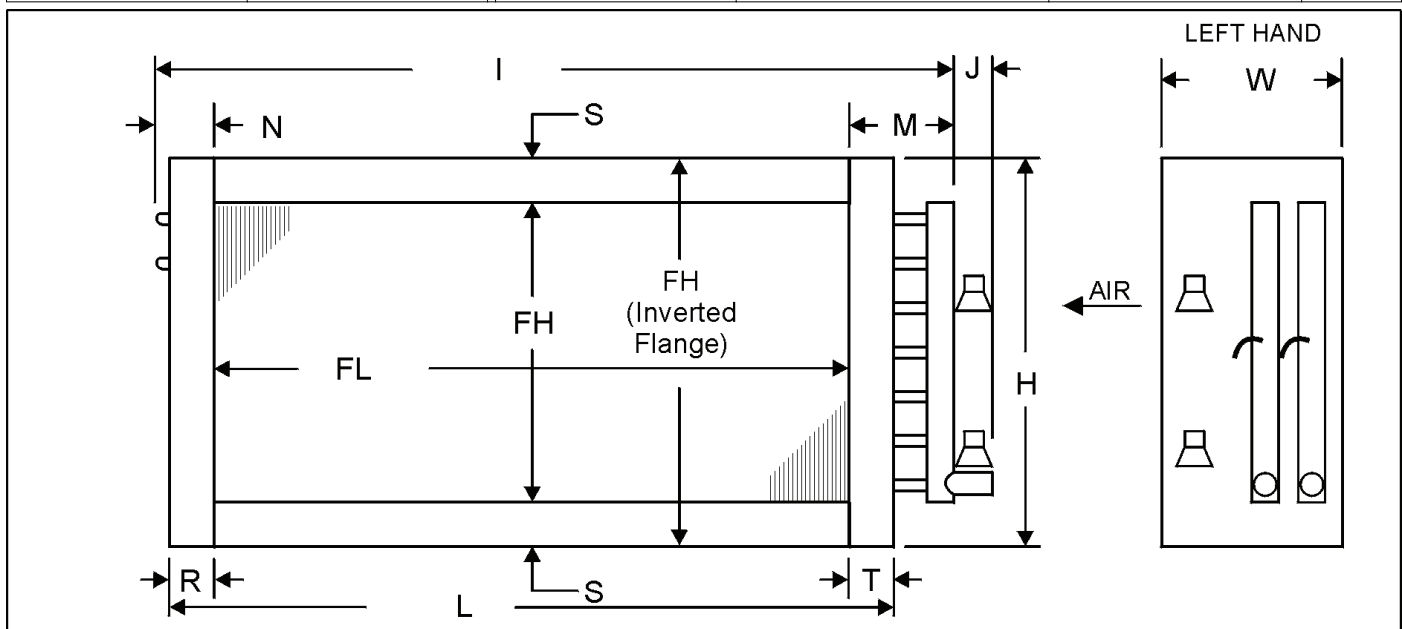
- B) Rated In Compliance With ARI 410.
- C) Coil Not Within Certified ARI Directory.
- J) Coil Will Be Supplied With Multiple Distributors.
- K) Special Circuiting, Dead Tubes May Be Required, Consult Factory.
- M) Coil rating valid for Heatcraft coils only.
- Q) If evaporator is used in a heatpump application, change tubing material to 5/8 Stainless Steel or 5/8 Carbon Steel or select a 3/8 OD coil.

Customer:
 Contact:
 Telephone:
 Cell:
 Fax:
 Job:
 Quote #: 0

Date: 9/29/2009
 From:
 Company:
 Return Tel:
 Return Fax:

ITEM	QTY	MODEL NUMBER					FL (IN)	HAND
		TYPE	FPI	ROWS	FIN	FH (IN)		
DXM5-3	1	5EJ	06	04	B	55.50	67.00	Left

MATERIALS OF CONSTRUCTION		OPTIONS				
Fin	0.0075 Aluminum	Coating	None		Nitrogen Charge	No
Tube	0.020 Copper	Casing Type	Flanged		Moisture Eliminator	No
Casing	Galvanized Steel	Bypass Kit Size	None		Mounting Holes	No
Conn. Material	Copper	Distributor Location			Label Kit	No
Conn. Type	Sweat	Distributor Tube	0.3125			
Conn. Size	2.125/1.375	Nozzle Number	25			
		Number of Circuits	18			



DIMENSIONAL DATA(IN)										
H	I	J	L	M	N	R	S	T	W	SJC
58.50	76.00	6.00	70.00	5.75	3.25	1.50	1.50	1.50	7.50	

NOTES:

GENERAL NOTES:

1. All dimensions are in inches.
2. Phenolic coated coils require a longer lead-time since they must be re-tested after coating.
3. .375 inch mounting holes will be provided on 6 inch centers from the centerline of the fin height and finned length. Not available when S < 0.75 inches.
4. The suction line should be connected to the lower connection on the entering air side for counterflow operation.